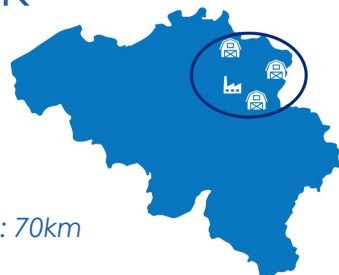




MILK SOURCING IN BELGIUM

LOCAL FRESH MILK

100%



Average distance to Rotselaar factory: 70km

TRANSPARENCY & TRACABILITY



86 family farms



RELATIONSHIP WITH FARMERS



2 fieldworkers daily on the farm, with personalised coaching to improve quality, animal welfare standard and CO2 footprint



Direct relation with our farmers for 15-20 years



First in Belgium with an innovative price model to reduce volatility; 33% of the volume under this Cost performance model

THE WAY WE FARM



32 energy scan performed to reduce energy use on farm and produce renewable energy. 45% of our farms produce renewable energy



All farmers received animal welfare audit in 2020
Average score 76/100 (none out of norm at critical questions)



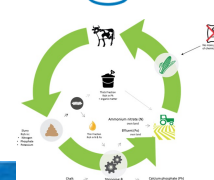
93% volunteer individual CO2 calculation participation in 2019
Average score 0,89 CO2 eq/kg milk



100% traced soy



Best-in-class for milk quality (cells, germs, antibio, fat, protein)



Wing project to find innovative and sustainable solution for livestock manure surplus and create circular farming from economical and regenerative agriculture point of view